

## **BASEL- III - PILLAR 3 DISCLOSURE AS ON 30.06.2019**

### **Table DF - 2**

#### **Capital Adequacy**

##### **Qualitative Disclosures:**

##### **A. A summary discussion of the Bank's approach to assessing the adequacy of its capital to support current and future activities.**

In order to strengthen the capital base of banks in India, the Reserve Bank of India in April 1992 introduced capital adequacy measures in banks, based on the capital adequacy framework (Basel I) issued by Basel Committee on Banking Supervision (BCBS). Initially, the framework addressed capital for credit risk, which was subsequently amended to include capital for market risk as well. The Bank has been compliant with regard to maintenance of minimum capital for credit and market risks.

Subsequently, the BCBS has released the "International Convergence of Capital Measurement and Capital Standards: A Revised Framework" (popularly known as Basel II document) on June 26, 2004. Reserve Bank of India has issued final guidelines on April 27, 2007 for implementation of the New Capital Adequacy (Basel II) Framework.

In line with the RBI guidelines, the Bank has successfully migrated to the revised framework (Basel-II) from 31.03.2009. The Bank has continued the Parallel run of Basel II framework continuously tracking the exposures and studied the impact on Bank's Capital to Risk weighted Assets Ratio (CRAR) on a quarterly basis.

Reserve Bank of India has issued guidelines based on the Basel III reforms on capital regulation during May 2012, to the extent applicable to banks operating in India. The Basel III capital regulation has been implemented from April 01, 2013 in India in phases and it was decided originally to implement fully as on March 31, 2018. RBI issued detailed Guidelines on Composition of Capital Disclosure Requirements on May 28, 2013. Another circular on "Implementation of Basel III Capital Regulations in India – Capital Planning" has been issued by RBI on March 27, 2014, in which, the transitional period for full implementation of Basel III Capital Regulations in India is extended upto March 31, 2019, instead of March 31, 2018.

Further, on 10.01.2019, RBI has issued a circular, in which, the transitional period for full implementation of Basel III Capital Regulations in India is extended upto March 31, 2020, instead of March 31, 2019. Accordingly, 'Capital Conservation Buffer Framework' as applicable from March 31, 2018 (i.e. CCB at 1.875%) will also apply from March 31, 2019 till the CCB attains the level of 2.5% on March 31, 2020.

RBI has issued circular on "Prudential Guidelines on Capital Adequacy and Liquidity Standards – Amendments" on 31.03.2015. The Basel III Capital Regulations have been consolidated in Master Circular – Basel III Capital Regulations vide circular No. DBOD.No. BP.BC.1 / 21.06.201 / 2015-16 dated July 1, 2015.

Under the Basel II framework, the total regulatory capital comprises of Tier I (core capital) and Tier 2 capital (supplementary capital). In order to improve the quality of regulatory capital, the capital will predominantly consist of Common Equity Tier1 (CET1) under Basel III. Non-equity

Tier 1 and Tier 2 capital would continue to form part of regulatory capital subject to eligibility criteria as laid down in Basel III. The Basel III capital regulations continue to be based on three-mutually reinforcing Pillars, viz. Minimum Capital Requirements (Pillar 1), Supervisory Review of Capital Adequacy (Pillar 2) and Market Discipline (Pillar 3) of the Basel II Capital Adequacy framework.

The Basel-III norms mainly seek to:

- Raise the quality of capital to ensure that the banks are capable to absorb losses on both as going concern and as gone concern basis.
- Increase the risk coverage of the capital framework.
- Introduce leverage ratio to serve as a backstop to the risk-based capital measure.
- Raise the standards for the supervisory review process and public disclosures etc.

The macro prudential aspects of Basel III are largely enshrined in the capital buffers. Both the buffers i.e. the capital conservation buffer and the countercyclical buffer are intended to protect the banking sector from stressed situations and business cycles.

### **Minimum capital requirements under Basel-III:**

Under the Basel III Capital Regulations, banks are required to maintain a minimum Pillar 1 Capital (Tier-I + Tier-II) to Risk-weighted Assets Ratio (CRAR) of 9% on an on-going basis. Besides these minimum capital requirements, Basel III also provides for creation of capital conservation buffer (CCB) and countercyclical capital buffer (CCCB).

As per the extant RBI guidelines mentioned above, the transitional period for full implementation of Basel III Capital Regulations in India is extended upto March 31, 2020 till the CCB attains the level of 2.5% on March 31, 2020.

The Transitional Arrangements as per the RBI norms is explained below.

Capital Ratios	31.03.2016	31.03.2017	31.03.2018/ 31.03.2019 *	31.03.2020
Minimum Common Equity Tier I (CET-1)	5.50	5.50	5.50	5.50
Capital Conservation Buffer	0.625	1.250	1.875	2.50
Minimum CET1 + CCB	6.125	6.75	7.375	8.00
Minimum Tier 1 Capital (excluding CCB)	7.00	7.00	7.00	7.00
Tier-2 Maximum allowed	2.00	2.00	2.00	2.00
Minimum Total Capital	9.00	9.00	9.00	9.00
Minimum Total Capital + CCB	9.625	10.250	10.875	11.50

\* as per the RBI guidelines vide their circular dt.10.01.2019.

### **B. The Bank's approach in assessment of capital adequacy**

The Bank is following standardized approach, Standardized Duration approach and Basic Indicator approach for measurement of capital charge in respect of credit risk, market risk and operational risk respectively. Besides computing CRAR under the Pillar I requirement, the Bank also undertakes stress testing periodically in various risk areas to assess the impact of stressed scenario or plausible events on asset quality, liquidity, profitability and capital adequacy. The

bank conducts Internal Capital Adequacy Assessment Process (ICAAP) on an annual basis to assess the sufficiency of its capital funds to cover the risks specified under Pillar – I and Pillar-II of Basel guidelines. The adequacy of Bank’s capital funds to meet the future business growth is being assessed in the ICAAP document.

**C. Quantitative Disclosures:**

**Rs in Crore**

a)	Capital requirements for Credit Risk: (@ 9.00% on Risk weighted Assets)		
	• Portfolios subject to standardised approach		2429.41
	• Securitisation exposures		Nil
b)	Capital requirements for Market Risk:		
	• Standardised duration approach		48.11
	○ Interest Rate Risk	17.28	
	○ Equity risk	28.83	
	○ Foreign exchange risk	2.00	
c)	Capital requirements for Operational Risk:		
	• Basic indicator approach		279.51
	Minimum capital required (a+b+c)		2757.03
d)	Capital Conservation Buffer (CCB) at 1.875%		582.91
	Minimum Total Capital + CCB		3339.94
e)	Total Capital Funds available		4874.34
	Total Risk Weighted Assets		31088.73
	Common Equity Tier I CRAR % (excluding CCB)		13.295%
	Capital Conservation Buffer %		1.875%
	Tier I CRAR %		15.17%
	Tier II CRAR %		0.51%
	Total CRAR %		15.68%

**2. Risk Exposure and Assessment**

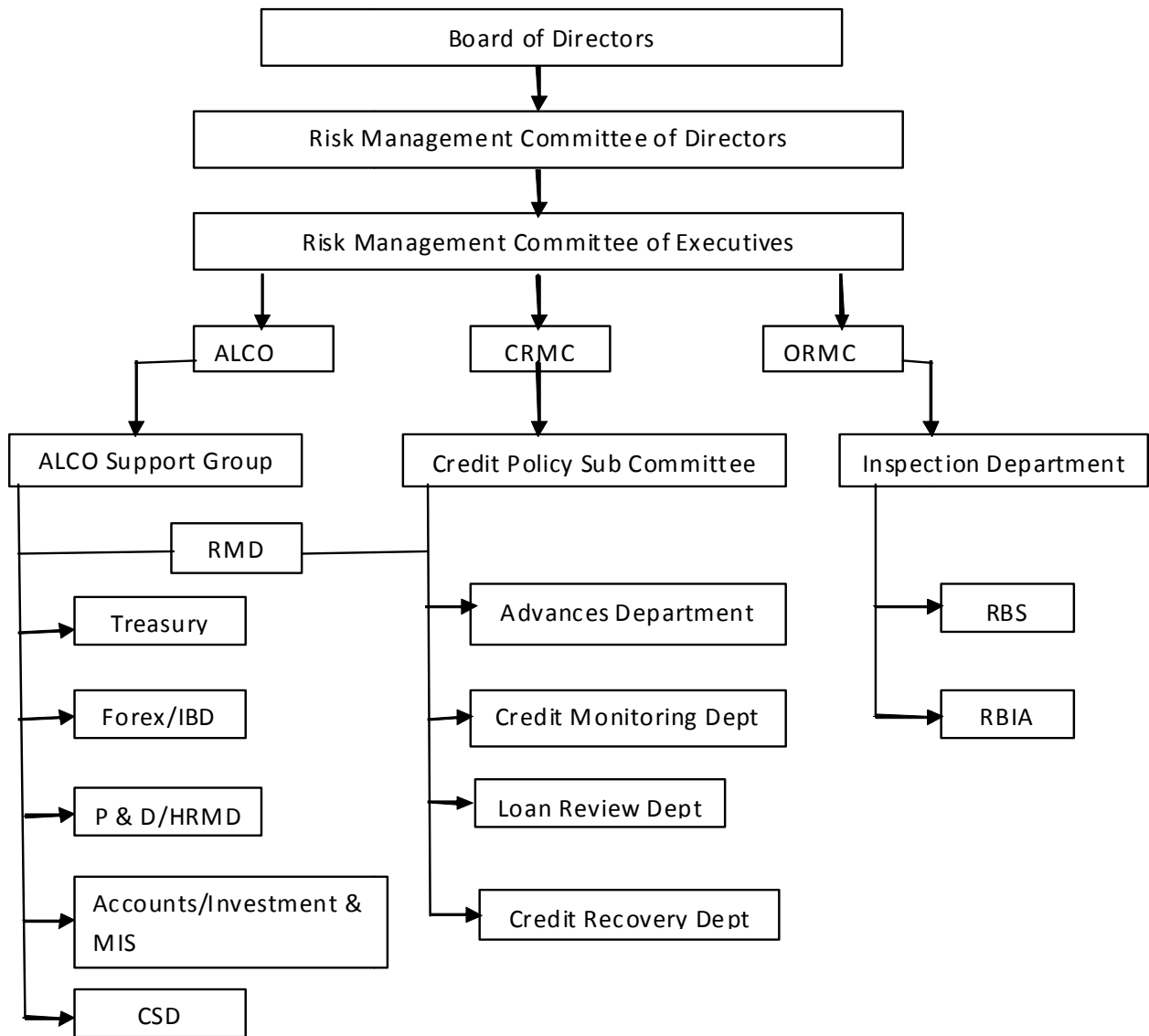
Risk is an integral part of banking business in an ever dynamic environment, which is undergoing radical changes both on the technology front and product offerings. The main risks faced by the bank are credit risk, market risk and operational risk. The bank aims to achieve an optimum balance between risk and return to maximize shareholder value. The relevant information on the various categories of risks faced by the bank is given in the ensuing sections. This information is intended to give market participants a better idea on the risk profile and risk management practices of the bank.

The Bank has a comprehensive risk management system in order to address various risks and has set up an Integrated Risk Management Department (RMD), which is independent of operational departments. Bank has a Risk Management Committee of Board functioning at apex level for formulating, implementing and reviewing bank’s risk management measures pertaining to credit, market and operational risks. Apart from the Risk Management Committee of the Board at apex level, the Bank has a strong bank-wide risk management structure comprising of Risk Management Committee of Executives (RMCE) assisted by Asset Liability Management Committee (ALCO), Credit Risk Management Committee (CRMC) and Operational Risk Management Committee (ORMC) at senior management level. Credit Risk Management

Committee deals with credit policies and procedures, Asset Liability Management Committee deals with Asset Liability Management (ALM) and Investment Policy of the Bank and Operational Risk Management Committee formulates policies and procedures for managing operational risks.

The Bank has formulated the required policies such as Integrated Risk Management Policy, Loan Policy, Credit Risk Management Policy, ALM Policy, Integrated Treasury Policy, Inspection and Audit policies, KYC policy, Risk Based Internal Audit Policy, Stress Testing Policy, Disclosure Policy, ICAAP policy and Credit Risk Mitigation & Collateral Management Policy, Risk Rating Policy, Pricing policy, etc for mitigating the risk in various areas and monitoring the same.

The structure and organization of Risk Management functions of the bank is as follows:



**TABLE DF – 3**  
**Credit Risk: General Disclosures**

**Credit Risk:**

Credit Risk is a possibility of losses associated with diminution in the credit quality of borrowers or counterparties. In a bank's portfolio, Credit Risk arises mostly from lending activities of the bank, when a borrower is unable to meet its financial obligations emanating from potential changes in the credit quality / worthiness of the borrowers or counterparties.

Credit Risk Management encompasses a host of management techniques, which help the banks in mitigating the adverse impacts of credit risk. The objective of the Credit Risk Management is to identify, measure, monitor and control credit risk by adopting suitable methodology.

The Bank has formulated Loan Policy which stipulates various prudential norms, bench marks, guidelines for sanctioning of credits and recovery of the same. The Bank has also formulated a separate Credit Risk Management Policy, besides a Policy on Credit Risk Mitigation and Collateral Management.

Credit Risk is assessed by a robust internal credit risk rating system. Credit Risk Rating is the process wherein the merits and demerits of a borrower are captured and assigned with scorings, which enables the Bank to take a view on the acceptability or otherwise of any credit proposal.

**Credit Risk Management Policy:**

The Bank has put in place a well-structured Credit Risk Management Policy duly approved by the Board. The Policy document defines organization structure, roles and responsibilities and the processes whereby the Credit Risks carried by the Bank can be identified, quantified and managed. Credit Risk is monitored on a bank wide basis and the compliance with regard to the risk limits approved by the Credit Risk Management Committee (CRMC)/ Board is ensured.

The Bank adopts the definition of 'past due' and 'impaired credits' (for reporting purposes) as defined by Reserve Bank of India under Income Recognition, Asset Classification and provisioning (IRAC) norms (vide RBI Master Circular dated July 01, 2015).

**Quantitative Disclosures**

Total Gross Credit Risk Exposures including Geographic Distribution of Exposure:

Exposure as on 30.06.2019	Rs. in crore		
	Domestic	Overseas	Total
<b>Fund based</b>	34765.75	--	34765.75
<b>Non-fund based</b>	2377.05	--	2377.05
<b>Investment (Non SLR)</b>	365.01	--	365.01
<b>Total</b>	<b>37507.81</b>	<b>--</b>	<b>37507.81</b>

**Industry type distribution of exposures – 30.06.2019**

**Rs. in crore**

<b>INDUSTRY /ACTIVITY</b>	<b>FUNDED EXPOSURE</b>	<b>NON-FUNDED EXPOSURE</b>	<b>INVESTMENT EXPOSURE (NON SLR)</b>	<b>TOTAL EXPOSURE</b>
Mining and Quarrying	64.77	5.02	0.13	69.92
Iron and Steel	1264.78	204.94	0.33	1470.05
Other Metal and Metal Products	528.63	89.18	0.00	617.81
Engineering of which Electronics	151.13	69.43	0.00	220.56
Others (incl Electrical & Home Appliances)	538.75	151.39	0.09	690.23
Cotton Textiles	1746.46	82.57	0.00	1829.03
Other textiles	1952.95	47.89	0.00	2000.84
Food Processing	224.94	59.12	0.00	284.06
Beverages and Tobacco	36.96	15.08	0.00	52.04
Leather and Leather products	33.43	1.22	0.00	34.65
Wood and Wood Products	126.69	68.69	0.00	195.38
Paper and Paper Products	758.91	29.81	0.00	788.72
Petroleum, Coal Products and Nuclear Fuels	75.01	2.10	0.00	77.11
Drugs and Pharmaceuticals	79.78	18.18	0.00	97.96
Other Chemicals and Chemical Products	275.45	111.19	0.00	386.64
Rubber, Plastic and their Products	426.82	37.25	0.00	464.07
Glass & Glassware	19.33	0.00	0.00	19.33
Cement and Cement Products	22.36	3.42	0.00	25.78
Vehicles, Vehicle Parts and Transport Equipments & auto parts	242.20	32.47	0.00	274.67
Gems and Jewellery	91.50	22.58	0.00	114.08
Construction	1567.57	28.93	0.00	1596.50
Infrastructure	365.03	35.02	0.06	400.11
Other Industries	122.11	10.09	0.00	132.20
All Industries Total	10715.56	1125.57	0.61	11841.74
Residuary other advances	24050.19	1251.48	364.40	25666.07
<b>Total Gross Exposure</b>	<b>34765.75</b>	<b>2377.05</b>	<b>365.01</b>	<b>37507.81</b>

Note: The exposure to Other Textiles industry accounted for 5.33% of Total Gross Exposure as of 30.06.2019. The coverage of advances to the above industry occupies the top position among the total industry sectors.



**Residual contractual maturity breakdown of assets 30.06.2019**  
(computed as per the guidelines of RBI on Asset Liability Management)

**Rs in Crore**

PERIOD	Cash, RBI Balance and Balance with all Banks	Advances (Net)	Investments (Net)	Fixed & Other Assets	Total
1 Day	727.40	74.83	1514.72	65.87	2382.82
2 to 7 Days	386.08	1241.46	373.52	70.70	2071.76
8 to 14 Days	0.00	1982.16	368.48	92.92	2443.56
15 to 30 Days	169.07	596.50	803.08	29.19	1597.84
31 days to 60 days	281.43	521.09	681.09	9.81	1493.42
61 days to 90 days	298.39	697.44	410.09	9.99	1415.91
Over 3 Months & upto 6 Months	437.96	1313.43	1096.79	201.20	3049.38
Over 6 Months & upto 1 Year	907.68	3685.89	426.34	240.89	5260.80
Over 1 Year & upto 3 Years	555.76	16116.46	2342.32	223.67	19238.21
Over 3 Years & upto 5 Years	15.15	2682.37	73.62	189.68	2960.82
Over 5 Years	37.42	2834.91	409.15	927.11	4208.59
<b>Total</b>	<b>3816.34</b>	<b>31746.54</b>	<b>8499.20</b>	<b>2061.03</b>	<b>46123.11</b>

**Amount of NPAs (Gross) Rs in crore**

Sub-standard	538.41
Doubtful 1	224.69
Doubtful 2	187.20
Doubtful 3	115.60
Loss	10.30
<b>Gross NPA Total</b>	<b>1076.22</b>

**Geographical Area-wise NPAs: Rs in crore**

Gross NPA – Domestic	1076.22
Gross NPA – overseas	Nil
<b>Gross NPA – Total</b>	<b>1076.22</b>

**The Amount of Net NPAs is Rs. 600.00 crore**

**The NPA ratios are as under**

- Gross NPA to Gross Advances - 3.34%
- Net NPA to Net Advances - 1.89%

**Major Industry-wise NPA as on 30.06.2019 Rs in Crore**

Industry	Gross NPA	Provision held
Other Textiles	41.50	8.63

**The movement of NPA is as under:**

	Rs in crore
i. Opening balance at the beginning of the quarter (01.04.2019)	977.05
ii. Additions made during the quarter	199.88
iii. Reductions during the quarter	100.71
iv. Closing balance at the end of the quarter (30.06.2019) ( i + ii - iii)	1076.22

**The movements of provisions for NPAs are as under:**

Nature	Rs in crore		
	Floating Provision	Specific Provision	Total Provision
i. Opening balance at the beginning of the quarter(01.04.2019)	18.65	362.63	381.28
ii. Provisions made during the quarter	---	144.00	144.00
iii. Write-off/Write-back of excess provisions during the quarter	---	53.23	53.23
iv. Closing Balance at the end of quarter (30.06.2019) ( i + ii - iii)	18.65	453.40	472.05

Recovery made during this quarter ended 30.06.2019, which is directly taken to Income Account amounts to Rs. 31.47 crore.

The amount of non-performing investment – Rs.0.33 crore.

The amount of provision held for non-performing investment is Rs.0.33 crore.

**The movement of provisions for depreciation on investments**

	Rs in crore
i. Opening balance at the beginning of the quarter (01.04.2019)	151.13
ii. Provisions made during the quarter	0.00
iii. Write-off during the quarter	0.00
iv. Write-back of excess provisions during the quarter	24.00
v. Closing Balance at the end of the quarter (30.06.2019) ( i + ii – iii – iv)	127.13



**TABLE - DF - 4**

**CREDIT RISK: DISCLOSURES FOR PORTFOLIO SUBJECT TO THE STANDARDISED APPROACH**

**Qualitative Disclosures**

The Bank is using the services of the External Credit Rating Agencies approved by Reserve Bank of India, namely a) CRISIL, b) ICRA, c) CARE, d) FITCH India, e) Brickwork, f) SMERA ratings and g) Infomerics Valuation and Rating Pvt Ltd to facilitate the corporate borrower customers who enjoy credit facilities above Rs.5.00 crore to solicit the ratings. The corporates which are yet to get the approved ratings from these rating agencies are treated as 'unrated'.

The Bank computes risk weight on the basis of external rating assigned, both Long Term and Short Term, for the facilities availed by the borrower. The external ratings assigned are generally facility specific. The Bank follows the below mentioned procedures as laid down in the Basel III guidelines for usage of external ratings:

- Rating assigned by one rating agency is used for all the types of claims on the borrowing entity.
- Long term ratings are used for facilities with contractual maturity of one year & above.
- Short term ratings are generally applied for facilities with contractual maturity of less than one year.

**Quantitative Disclosures**

The exposures after risk mitigation as per standardised approach, (rated and unrated) in the following three major risk buckets, as well as, those that are deducted as per risk mitigation are given below.

	Rs. in crore		
Risk Weight	Rated	Unrated	Total
Below 100 %	273.73	24618.17	24891.90
At 100 %	448.18	12831.13	13279.31
More than 100 %	1527.16	1465.23	2992.39
Total outstanding after mitigation	2249.07	38914.53	41163.60
Deducted (as per Risk Mitigation)	3.39	4986.37	4989.76

**Table DF-16: Equities – Disclosure for Banking Book Positions**

There are no equity investments as on 30.06.2019 under Banking Book (HTM).

### Leverage Ratio

Leverage ratio is a non-risk based measure of all exposures for the Tier-I capital. The leverage ratio is calibrated to act as a credible supplementary measure to the risk based capital requirements. The Basel III leverage ratio is defined as the capital measure (the numerator) divided by the exposure measure (the denominator), with this ratio expressed as a percentage. Previously, the indicative benchmark Leverage Ratio prescribed was 4.50% (minimum), which has been reduced to 3.50% (minimum) as per the RBI circular on "Basel III Capital Regulations - Implementation of Leverage Ratio", vide DBR.BP.BC.No.49/21.06.201/2018-19 dated 28.06.2019.

$$\text{Leverage Ratio} = \frac{\text{Capital Measure (Tier I Capital)}}{\text{Exposure Measure}}$$

<b>Table DF 17- Summary comparison of accounting assets vs. leverage ratio exposure measure</b>		
	<b>Item</b>	<b>30.06.2019 (Rs. In Million)</b>
1	Total consolidated assets as per published financial statements	461231.13
2	Adjustment for investments in banking, financial, insurance or commercial entities that are consolidated for accounting purposes but outside the scope of regulatory consolidation	-----
3	Adjustment for fiduciary assets recognized on the balance sheet pursuant to the operative accounting framework but excluded from the leverage ratio exposure measure	-----
4	Adjustments for derivative financial instruments	1340.74
5	Adjustment for securities financing transactions (i.e. repos and similar secured lending)	-----
6	Adjustment for off-balance sheet items (i.e. conversion to credit equivalent amounts of off- balance sheet exposures)	20903.46
7	Other adjustments (intangible)	(478.95)
<b>8</b>	<b>Leverage ratio exposure</b>	<b>482996.38</b>

<b>Table DF 18: Leverage ratio common disclosure template – 30.06.2019</b>		
	<b>Item</b>	<b>Leverage ratio framework (Rs. In Million)</b>
<b>On – balance sheet exposures</b>		
1	On-balance sheet items (excluding derivatives and SFTs, but including collateral)	461231.13
2	(Asset amounts deducted in determining Basel III Tier 1 capital)	(478.95)
3	<b>Total on-balance sheet exposures</b> (excluding derivatives and SFTs) (sum of lines 1 and 2)	<b>460752.18</b>

<b>Derivative Exposures</b>		
4	Replacement cost associated with all <i>derivative</i> transactions (i.e. net of eligible cash variation margin)	1340.74
5	Add-on amounts for PFE associated with <i>all</i> derivative transactions	----
6	Gross-up for derivatives collateral provided where deducted from the balance sheet assets pursuant to the operative accounting framework	----
7	(Deductions of receivables assets for cash variation margin provided in derivative transactions)	----
8	(Exempted CCP leg of client-cleared trade exposures)	----
9	Adjusted effective notional amount of written credit derivatives	----
10	(Adjusted effective notional offsets and add-on deductions for written credit derivatives)	----
<b>11</b>	<b>Total derivative exposures (sum of lines 4 to 10)</b>	<b>1340.74</b>
<b>Securities financing transaction exposures</b>		
12	Gross SFT assets (with no recognition of netting), after adjusting for sale accounting transactions	----
13	(Netted amounts of cash payables and cash receivables of gross SFT assets)	----
14	CCR exposure for SFT assets	----
15	Agent transaction exposures	----
<b>16</b>	<b>Total securities financing transaction exposures (sum of lines 12 to 15)</b>	<b>----</b>
<b>Other off-balance sheet exposures</b>		
17	Off-balance sheet exposure at gross notional amount	54171.75
18	(Adjustments for conversion to credit equivalent amounts)	(33268.29)
<b>19</b>	<b>Off-balance sheet items (sum of lines 17 and 18)</b>	<b>20903.46</b>
<b>Capital and total exposures</b>		
20	Tier 1 capital	<b>47154.07</b>
21	Total exposures (sum of lines 3, 11, 16 and 19)	<b>482996.38</b>
<b>Leverage ratio</b>		
22	<b>Basel III leverage ratio (20 /21)</b>	<b>9.76%</b>